

# BEDFORD TIMBERS UNITED KINGDOM

## COMMERCIAL GROUND MOUNT INSTALLATION

- Solar system powers business while feeding energy surplus to grid
- Practical and ideal solution with an excellent return on investment
- Optimal solar panels for use in agricultural installations

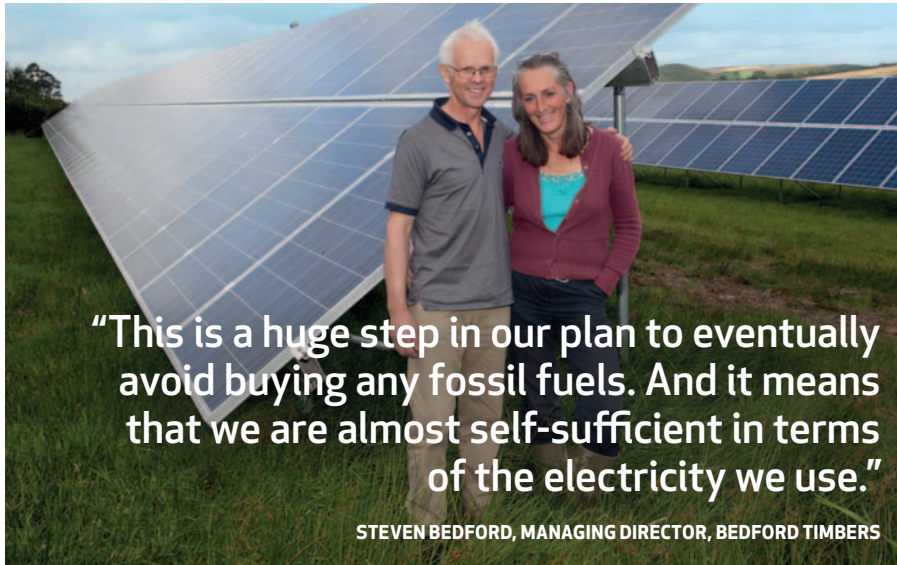
**250**  
kW SYSTEM  
SIZE

**225,000**  
kWh ANNUAL  
CAPACITY

**122**  
TONS CO<sub>2</sub> SAVED  
ANNUALLY



## 1,040 REC solar panels make up North Devon's largest solar farm and an ideal commercial solution with an excellent return on investment.



**"This is a huge step in our plan to eventually avoid buying any fossil fuels. And it means that we are almost self-sufficient in terms of the electricity we use."**

**STEVEN BEDFORD, MANAGING DIRECTOR, BEDFORD TIMBERS**

**WHEN BEDFORD TIMBERS OWNERS** Steven and Jo Bedford were looking to produce enough renewable electricity to power their farm and timber business, they wanted a solution that was reliable, would generate the energy they require and provide a good return on their investment.

After a site survey was carried out, the Bedfords were presented with an ideal solution – a 250 kW solar system installed on land that is not suitable for agriculture. The practical system means that the Bedfords will produce enough clean, green electricity to power their farm and timber business, while feeding its surplus energy back into the national grid.

"We decided to install solar panels from REC because they are the best performing solar panels in real world conditions, have excellent



REC is a leading global provider of solar energy solutions. With more than 15 years of experience, we offer sustainable, high performing products, services and investments for the solar industry. Together with our partners, we create value by providing solutions that better meet the world's growing energy needs. REC is headquartered in Norway and listed on the Oslo Stock Exchange (ticker: RECSOL). Our 1,600 employees worldwide generated revenues of USD 647 million in 2013.

quality and come with the reassurance of a solid company like REC," said Steven Bedford, Managing Director of Bedford Timbers. "This is a huge step in our plan to eventually avoid buying any fossil fuels. And it means that we are almost self-sufficient in terms of the electricity we use."

From start to finish, construction and installation of the high quality solar system was completed over a two month period.

At 13.49 percent per annum, the solar system at Bedford Timbers has an excellent return on investment and will have paid for itself after just 7.42 years. Producing enough electricity to power the equivalent of 30 houses, this environmental and financial initiative by the Bedfords will save 122 tons of CO<sub>2</sub> emissions each year.

### PROJECT OVERVIEW

## BEDFORD TIMBER SOLAR PLANT

### COMMERCIAL GROUND MOUNT

**Owner:**

Steven and Jo Bedford

**Location:**

South Molten, United Kingdom

**Type of Installation:**

Ground-mounted

**System Size:**

250 kW

**Solar Panel Type:**

REC 240 PE

**Number of Solar Panels Installed:**

1,040

**Annual Capacity:**

225,000 kWh

**Completion Date:**

July 2011



[www.recgroup.com](http://www.recgroup.com)